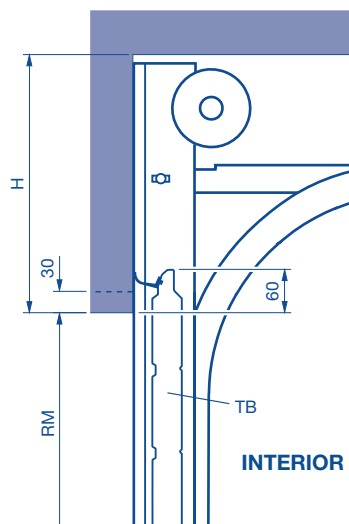


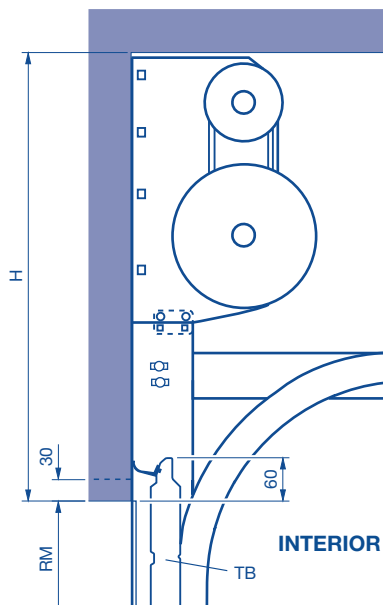
# Lintel Fitting

**Normal lintel fitting**  
Lintel variation up to 30 mm high



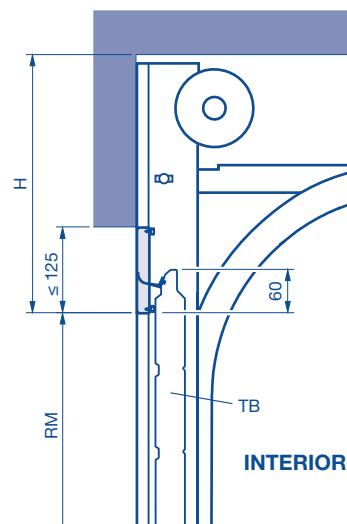
Smooth panel, anodised for APU F42, ALR F42, ALR F42 Glazing, ALR F42 Vitraplan to make up for insufficient headroom from 31 to 190 mm (only for track applications N and L)

**Normal lintel fitting**  
Double spring shaft

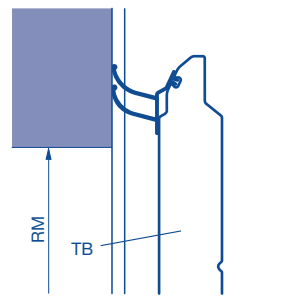
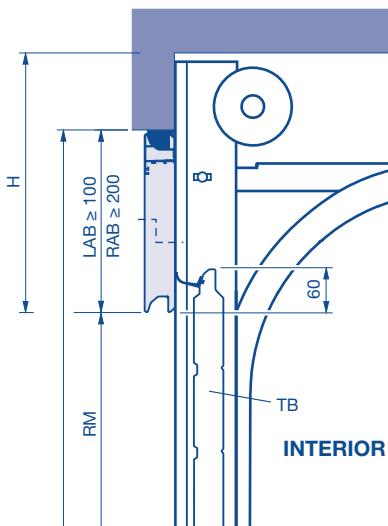
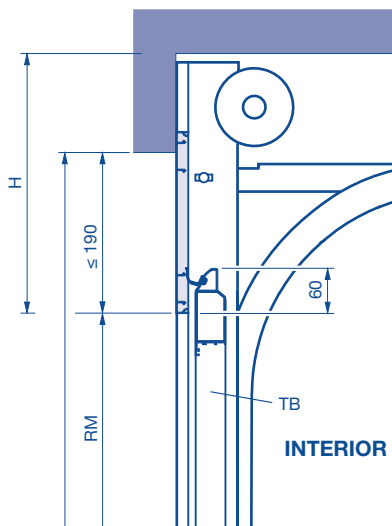


PU fascia panel to make up for insufficient headroom from 100 mm  
Aluminium fascia profile to make up for insufficient headroom (see table)

**Single-skinned steel fascia for SPU F42**  
to make up for insufficient headroom up to 125 mm (only for track applications N and L)



Lintel fitting with ThermoFrame



Aluminium frame fascia panel	
Height	Infill type
$\geq 200$	FU, LB, S, SE, XU, FK, KR
$\geq 245$	S2, S3, R2, C2, A2, A3, B2, B3, M2, M3
$\geq 230 - 692$	S2, S3, R2, C2, A2, A3, B2, B3, M2, M3 for APU F42 S-Line / ALR F42 S-Line

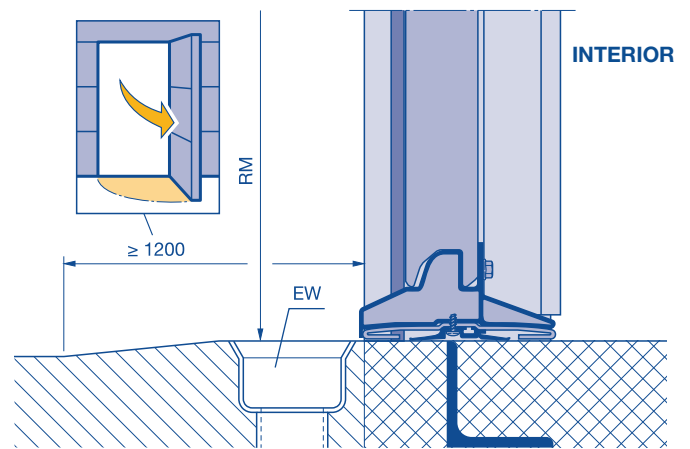
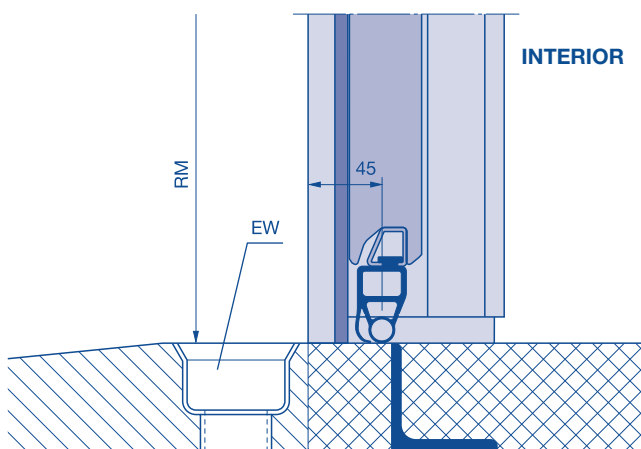
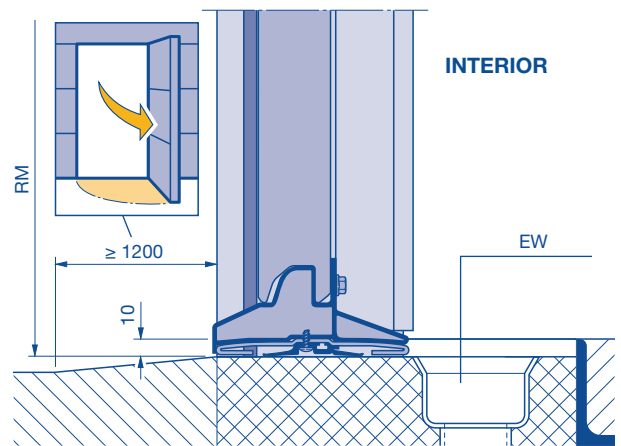
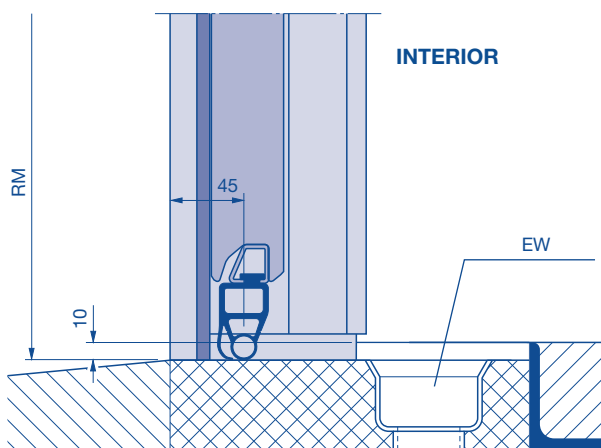
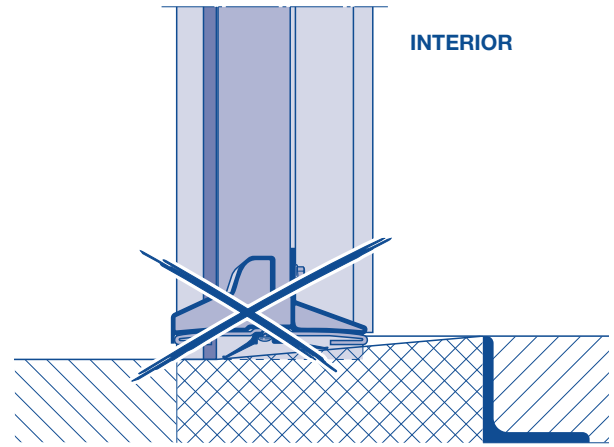
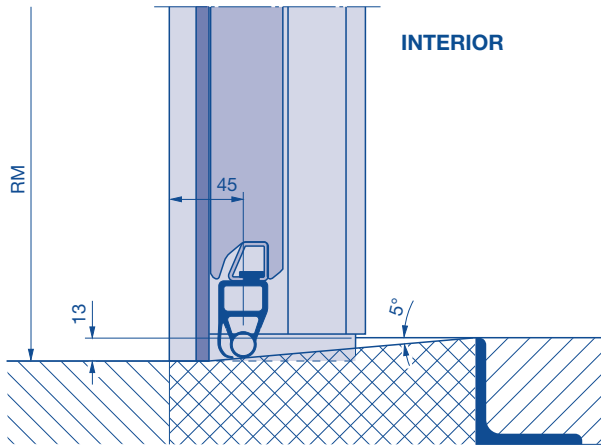
- H** Min. headroom (see page 42)
- RM** Grid
- TB** Door leaf
- LAB** Fascia panel
- RAB** Frame fascia panel

- Aluminium frame fascia panel with real glass infill VG, E2 and G2 on request.

# Bottom Edge

Without wicket door / with wicket door and threshold rail

With wicket door with trip-free threshold



EW Drainage  
RM Grid